

- Clinical laboratory fee includes: complete blood calculation of one specimen, renal function test, liver function test B, carcinoembryonic antigen test (CEA), and histopathology.
- Extra charges may apply under the following circumstances. Please contact our hospital staff for more details:
 - Additional examinations, laboratory tests, or treatment not included in the package are required (such as hemorrhoid ligation or biopsy)
 - Additional medication and medical supplies not included in the package are required
- Emergency services beyond the scheduled elective procedure are required
- Complications arise during the procedure
- Procedure is performed outside regular opening hours, on a Saturday, or on a hospital holiday
- Package fee includes accommodation in a standard ward. Private rooms, and semi-private rooms are also available at the hospital. Please contact our staff for more details.
- Hong Kong Adventist Hospital – Stubbs Road reserves the right to amend or change details of the above information without prior notice.

- 有關程序須於手術室辦公時間內進行：星期一至四，上午8時至下午10時；星期五和日，上午8時至下午6時。星期六及醫院假期除外。
- 套餐不包括手術前後門診診費及餐膳。
- 病理化驗費用包括1個樣本的全血球計算、腎功能檢查、肝功能檢查B、結直腸癌—癌胚抗原（CEA）檢查及組織病理學。
- 以下情況將收取額外費用，詳情請向本院職員查詢：
 - 計劃以外，另安排檢查、化驗、治療（如結紮痔瘡、抽取活組織等）
 - 使用計劃以外的藥物和醫療物品
 - 一般程序以外的緊急治療
 - 過程中出現併發症
 - 於非手術室辦公時間，或於星期六或醫院假期進行有關程序
- 以上價錢為普通房套餐之收費，本院另設私家房及半私家房套餐以供選擇，詳情請向本院職員查詢。
- 香港港安醫院—司徒拔道保留更改及刪改上述資料權利，而毋須另行通知。

Colorectal Cancer Care Part 3 : Chemotherapy 腸癌防護三部曲：化學治療

	Hospital Fees 醫院費
Chemotherapy 化學治療	From HK\$21,050起

Package includes 收費已包括：

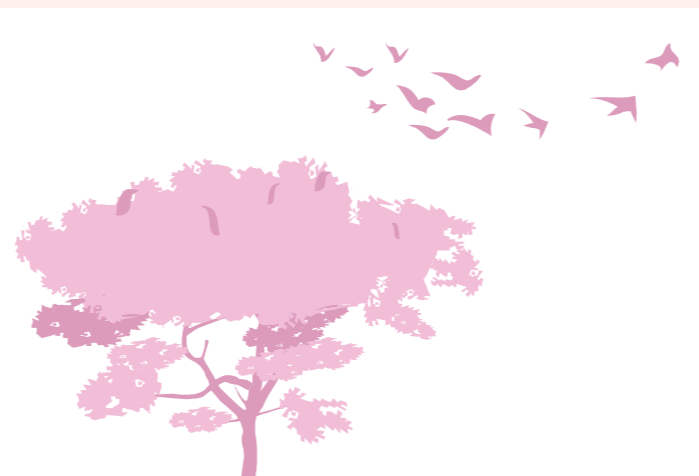
- + Clinical laboratory fee
- + Designated chemotherapy medication (Xeloda and Oxaliplatin) and other basic medication
- + 2 days accommodation in a standard ward
- + 病理化驗費用
- + 指定化學治療藥物（Xeloda及Oxaliplatin）及基本藥物
- + 2天住宿（普通房）

Terms and Conditions 條款及細則：

- The package does not include meals.
- The package does not include doctor's fees
- Clinical laboratory fee includes: complete blood calculation of one specimen, renal function test, liver function test B, carcinoembryonic antigen test (CEA), hepatitis B surface antigen and antibody tests (applies to first course of chemotherapy only).
- Chemotherapy fee will be charged per session.
- Extra charges may apply under the following circumstances. Please contact our hospital staff for more details:
 - Additional examinations, laboratory tests, or treatment not included in the package are required
 - Additional medication and medical supplies not included in the package are required
 - Emergency services beyond the scheduled elective procedure are required
- The package only applies to hospital designated specialists.

- The hospital also offers radiation therapy packages. Please contact our staff for more details.
- Package fee includes accommodation in a standard ward. Private rooms, and semi-private rooms are also available at the hospital. Please contact our staff for more details.
- Hong Kong Adventist Hospital – Stubbs Road reserves the right to amend or change details of the above information without prior notice.

- 套餐不包括餐膳。
- 套餐不包括醫生費。
- 病理化驗費用包括1個樣本的全血球計算、腎功能檢查、肝功能檢查B、癌症胚胎抗原、及乙型肝炎表面抗原和和抗體（只適用於首次化療）。
- 化學治療按次收費。
- 以下情況將收取額外費用，詳情請向本院職員查詢：
 - 計劃以外，另安排檢查、化驗、治療
 - 使用計劃以外或額外藥物和醫療物品
 - 一般程序以外的緊急治療
- 套餐只適用於本院指定專科醫生。
- 本院亦有提供放射性治療套餐，收費詳情請向本院職員查詢。
- 以上價錢為普通房套餐之收費，本院另設私家房及半私家房套餐以供選擇，詳情請向本院職員查詢。
- 香港港安醫院—司徒拔道保留更改及刪改上述資料權利，而毋須另行通知。



Map 路線圖



Hong Kong Adventist Hospital – Stubbs Road 香港港安醫院—司徒拔道

40 Stubbs Road, Hong Kong
香港司徒拔道40號
(852) 3651 8622
hkahinfo@hkah.org.hk



Service Information
服務詳情



Add Download App
下載應用程式

2022/01 Revised 修訂



Colorectal Cancer Care Package 「腸癌防護 3 部曲」套餐



4 Colorectal Cancer Care Package 「腸癌防護 3 部曲」套餐

Managed by hospital designated specialists
由本院指定專科醫生主理

Part 1 首部曲 Part 2 二部曲 Part 3 三部曲

Colonoscopy
腸鏡檢查

Colorectal
Surgery
腸癌手術

Chemotherapy
化學治療

Colorectal cancer prevention begins with colonoscopy. If you identify with any of the below risk factors or symptoms, please consult a doctor.

- + Aged 50 or above with a family history of colorectal cancer
- + Rectal bleeding
- + Change in bowel movement habits
- + Persistent abdominal pain, diarrhea, constipation, unexplained weight loss, or anemia

腸鏡檢查是預防腸癌的第一步，你有以下徵狀嗎？

詳情請諮詢醫生意見。

- + 50歲或以上並有家族腸癌病史
- + 大便出血
- + 排便習慣改變
- + 持續性腹痛、腹瀉、便秘、不明原因的體重減輕或貧血



Colorectal Cancer Care Package

4 Colorectal Cancer Care Part 1 : Colonoscopy 腸癌防護首部曲：腸鏡檢查

Intravenous (IV) sedation 靜脈注射			
	Hospital Fees 醫院費	Doctor's Fees 醫生費	Total 合共
Colonoscopy 腸鏡檢查	HK\$7,000	HK\$6,000	HK\$13,000
Colonoscopy and polypectomy 腸鏡檢查及 瘻肉切除	HK\$9,800	HK\$7,500	HK\$17,300

Monitored anesthesia care (MAC) 監察麻醉			
	Hospital Fees 醫院費	Doctor's Fees 醫生費	Total 合共
Colonoscopy 腸鏡檢查	HK\$7,300	HK\$8,000	HK\$15,300
Colonoscopy and polypectomy 腸鏡檢查及 瘻肉切除	HK\$9,700	HK\$10,000	HK\$19,700

Package includes 收費已包括：

- + Endoscopist procedure fee and in-patient care fee*
- + Anesthetist's fee (if needed)
- + Endoscopy Unit service fee
- + Anesthesia (for MAC only)
- + Sedatives and IV cannulation setup (for IV sedation only)
- + Polyp biopsy test (for polypectomy only and limited to three specimens)
- + Carbon dioxide insufflation and related supplies
- + Cardiac and blood oxygen saturation monitoring
- + Dressing

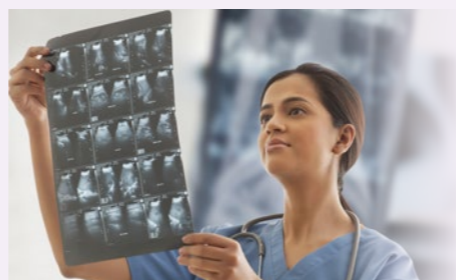
Colorectal Cancer Care Package

- + Oxygen inhalation
- + Accommodation in the Short Stay Unit (standard ward)
- + One DVD and one photo

*Applies to hospital designated specialist only

- + 專科醫生內視鏡程序及巡房費*
- + 麻醉科專科醫生費用（如有）*
- + 內視鏡室費用
- + 指定麻醉藥物（只適用於監察麻醉）
- + 鎮靜藥物及靜脈留置導管（只適用於靜脈麻醉）
- + 瘻肉活檢及病理化驗（只適用於瘻肉切除，及限3個樣本）
- + 二氧化碳注氣及所需物料
- + 心臟及血氧飽和度監察
- + 敷料
- + 氧氣吸入
- + 日間護理病房（普通房）
- + 光碟及照片各乙張

*只適用於本院指定專科醫生



Terms and Conditions 條款及細則：

1. The above packages are only valid for day cases in the Short Stay Unit (standard ward).
2. Procedure must be performed during regular opening hours of the Endoscopy Unit: Mondays to Fridays and Sundays, from 8:00 a.m. to 4:30 p.m. (The Endoscopy Unit is closed on Saturdays and hospital holidays.)
3. The above packages do not include pre- and post-procedure consultation fees or meals.

Colorectal Cancer Care Package

4. Extra charges may apply under the following circumstances. Please contact our hospital staff for more details:

- Procedure exceeds allotted time
 - Additional examinations or treatments not included in the package are required (such as hemorrhoid ligation or additional hemostasis procedures)
 - Additional medication or medical supplies not included in the package are required
 - Emergency services beyond the scheduled procedure are required
 - Complications arise during the procedure
 - Procedure is performed outside regular opening hours, on a Saturday, or on a hospital holiday
5. Package fee includes accommodation in a standard ward. Private rooms, and semi-private rooms are also available at the hospital. Please contact our staff for more details.
6. Hong Kong Adventist Hospital – Stubbs Road reserves the right to amend or change details of the above information without prior notice.

1. 以上費用只適用於日間手術及日間護理病房（普通房）。
2. 有關程序須於內視鏡室辦公時間內進行：星期一至五，及星期日，上午8時至下午4時半。星期六及醫院假期除外。
3. 以上套餐不包括內視鏡醫生檢查前後門診診症費及餐膳。
4. 以下情況將收取額外費用，詳情請向本院職員查詢：
 - 內視鏡檢查超出所預定的時間
 - 計劃以外，另安排檢查、治療（如結紮痔瘡、額外止血程序等）
 - 使用計劃以外的藥物和醫療物品
 - 一般程序以外的緊急治療
 - 過程中出現併發症
 - 於非內視鏡室辦公時間、星期六或醫院假期進行有關程序
 - 以上價錢為普通房套餐之收費，本院另設有貴賓房、私家房及半私家房套餐以供選擇，詳情請向本院職員查詢
5. 以上價錢為普通房套餐之收費，本院另設私家房及半私家房套餐以供選擇，詳情請向本院職員查詢。
6. 香港港安醫院—司徒拔道保留更改及刪改上述資料權利，而毋須另行通知。

Colorectal Cancer Care Package

4 Colorectal Cancer Care Part 2 : Colorectal Surgery 腸癌防護二部曲：腸癌手術

	Hospital Fees 醫院費	Doctor's Fees 醫生費	Total 合共
Colorectal Surgery 腸癌手術	HK\$78,400	HK\$106,600	HK\$185,000

Package includes 收費已包括：

- + Specialist surgeon procedure fee and in-patient care fee*
- + Anesthetist's fee*
- + Operating room fee
- + Standard anesthetic medication
- + Clinical laboratory fee
- + Daily medication
- + 7 days accommodation in a standard ward

*Applies to hospital designated specialist only

- + 專科醫生手術及巡房費*
- + 麻醉科專科醫生費*
- + 手術室費用
- + 基本麻醉藥物
- + 病理化驗費用
- + 日常藥物費用
- + 7天住宿（普通房）

*只適用於本院指定專科醫生



Terms and Conditions 條款及細則：

1. Procedure must be performed during regular opening hours of the operating room: Mondays to Thursdays: 8:00 a.m. to 10:00 p.m.; Fridays and Sundays: 8:00 a.m. to 6:00 p.m. (The operating room is closed on Saturdays and hospital holidays.)
2. The package does not include pre- and post-procedure consultation fees or meals.

Colorectal Cancer Care Package